



ugo basile®

TRANSFORMING IDEAS
INTO INSTRUMENTS

www.ugobasile.com

METABOLISM, FEEDING BEHAVIOUR

Metabolic Cages

Cat. No. 41700-002, -004, -005 for Rats

Cat. No. 4170-003, -033 for Mice

General

These carefully engineered metabolic cages, manufactured by TECNIPLAST, are designed for simplicity of operation and total part interchangeability and feature a unique funnel/cone design which effectively separates faeces and urine and collects them into vials outside the cage.

All components below the cage floor are removable without upsetting the test animal and thus preventing behavioural artifacts.

Four models are available for either rats or mice; their dimensions comply with current USA animal welfare regulations. See Ordering Information for basic metabolic cages.

The Tecniplast Metabolic Cages feature a unique funnel and cone design that effectively separates faeces and urine into tubes outside the cage.

There's **no urine washover** and no potential for urine to enter the faeces tube, so separation is immediate and complete. The results are untainted and the samples reliable.

The cage performs well with either mice (in group) or rats; a single mouse cage of new design is also available. Space saving and great visibility are facilitated by the 12-cage rack.



RELIABLE

DURABLE

- Practicality of use
- Flexibility
- Space saving

NEW
*see also 41853, with
food/drink and activity
analysis*

- Unique design and high quality materials, to maximize reliability and endurance.
- Every component is designed to be interchangeable to provide maximum flexibility

- Separation apparatus featuring low-adherence plastic materials: perfect separation and collection of faeces and urine
- Easy to remove feeder and collection tubes: feed filling and samples collection without disturbing the animals on test.

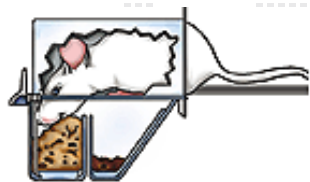
More than 25,000 publications about UGO BASILE

Cage Components

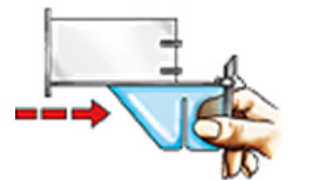
The Metabolic cage components are:

- an **Upper Chamber**, made of smooth, gnaw-proof materials.
- a **Feeder Chamber**, located outside cage. Size discourages rodent from nesting or sleeping inside. The drawer slides out for easy filling without disturbing the animal
- a **Collection funnel** and **separating cone**, unique design and non-wetting PMP ensure immediate, complete separation of faeces and urine
- a **Faeces Collection tube**, made of non-wetting PMP. Pellets roll down side of funnel to be collected in tube. Unlocks with single twist from outside of cage, without disturbing the animal.
- a Support grid of stainless-steel lets excreta pass through the conveniently spaced bars; mouse cage includes mouse-sized grid.

Cage Design



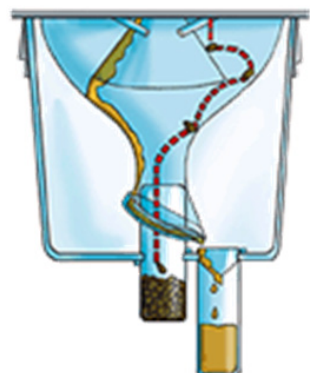
Two-part **feeder chamber** located outside the cage. The front chamber catches spilled food so faeces won't be contaminated. Feeder sizes prevent rodent from nesting or sleeping inside. Available in five sizes.



Drawer slides out of feeder chamber for easy filling, without disturbing animal.



Calibrated to accurately measure intake. Drain diverts overflow into collection tube so **water** can't contaminate urine.



Urine flows along the inside surface of the **collection funnel** and is directed by the urine ring directly into the urine collection tube.

A simple twist unlocks either faeces or urine tube. No need to dismantle cage or disturb animal.



Entire **lower section** of the cage can be easily removed.

Convenient for cleaning during multi-phase investigation.

Standard Cage Dimensions

The cage upper chamber, is available in two sizes:

- for mice and rats up to 300g, with a surface of 320 cm² and a height of 14 cm;
- for rats over 300g, with a surface of 450 cm² and a height of 18 cm.
- In the single-mouse cage, the usable floor area is 200cm² with an internal height of 13cm

Surface and height are comply with current regulations.

Net weight : 6Kg
 Gross weight : 10Kg
 Packing dimensions : 67x42x53cm

Ordering Information

BASIC METABOLIC CAGES

- 41700-002** Metabolic Cage for rats up to 150g
- 41700-003** Metabolic Cage for mice
- 41700-004** Metabolic Cage for rats 150 to 300g
- 41700-005** Metabolic Cage for rats over 300g
- 41700-003** Metabolic Cage for mice (groups)
- 41700-033** Metabolic Cage for single mouse



Above models include a single cage stand (except 41700-033 which is self-standing)

3M12D100 Vertical Rack for 12 Metabolic Cages, suitable for models 41700-002/005. Dimensions 124x48x190 cm